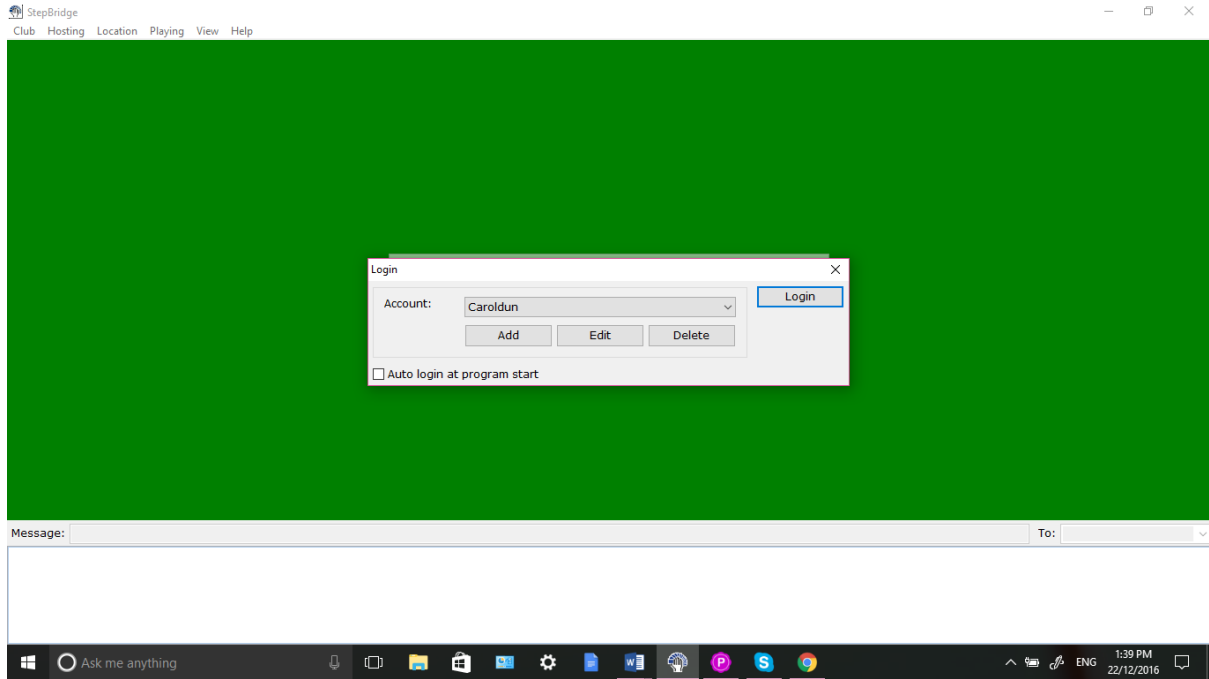
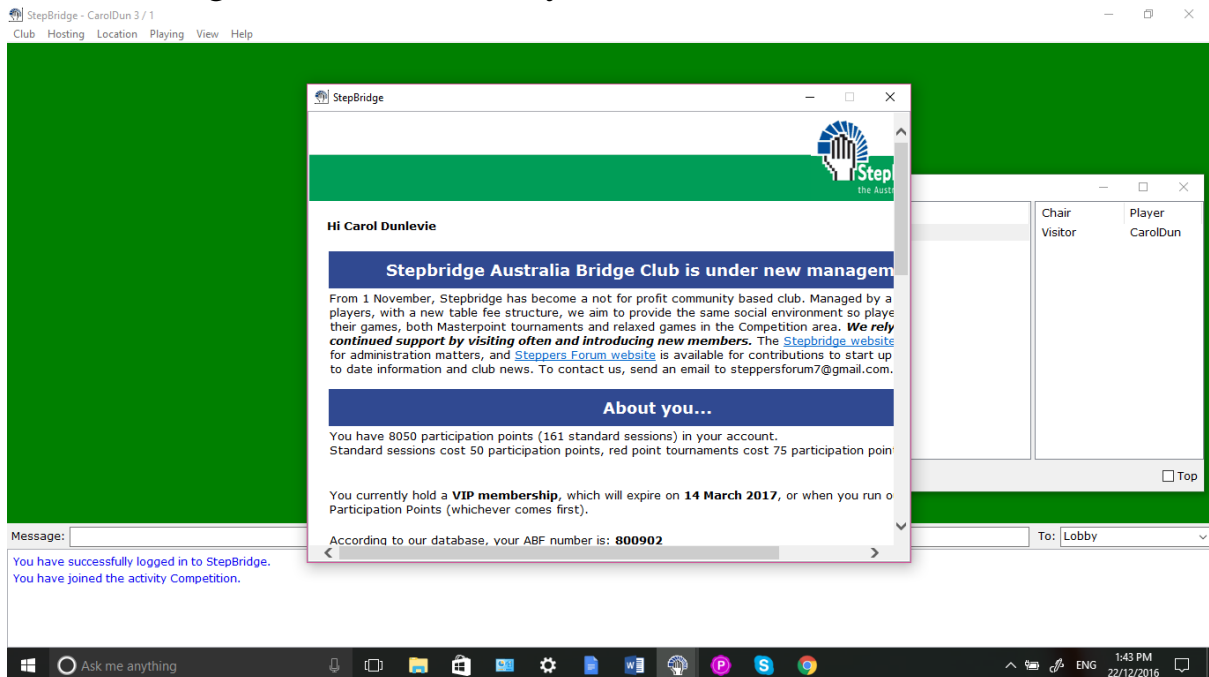


STEPBRIDGE TOUR

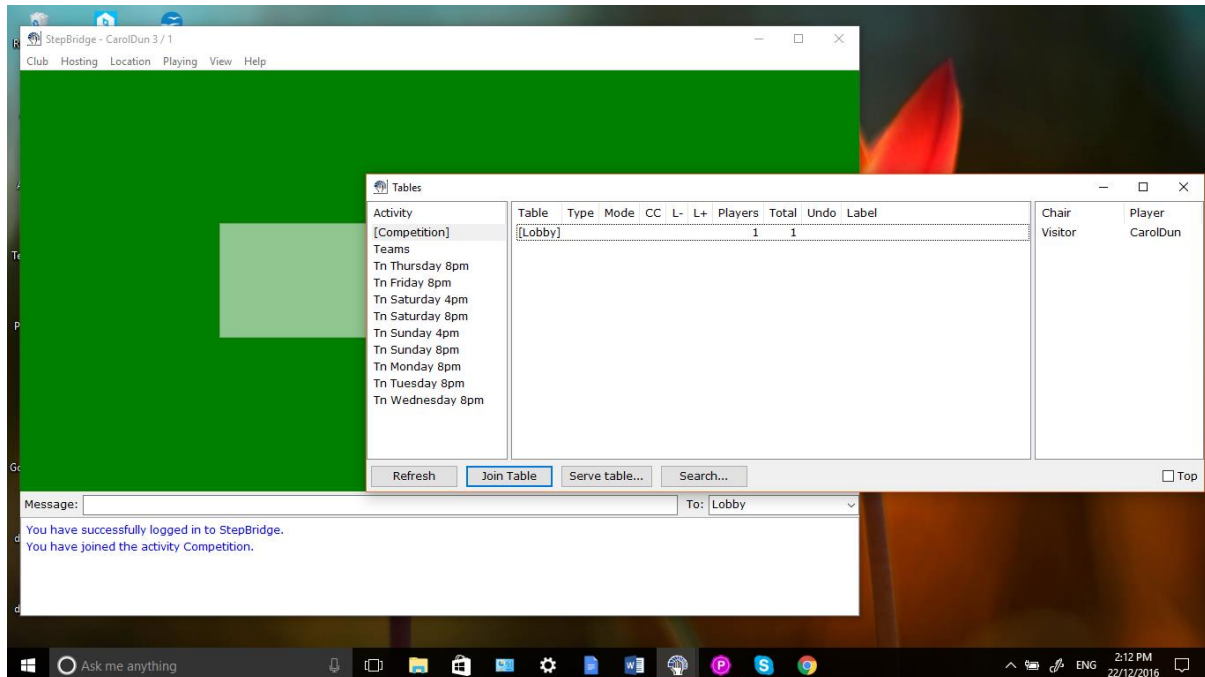
When you first open the stepbridge program you will need to **Add** your username and password. You may tick auto login at program start so you don't have to log on every time. Click on log in.



You will now see the explorer page as well as the Table/Tournament List showing who is in the lobby.



You can read the info page and close it. You can log back into Stepbridge at any time if you want to re-read it. Now you can see the Table/Tournament list. Before we go any further if your window is maximised filling the whole screen use the minimize button to make it smaller. This way you can keep the table list easily accessible and go

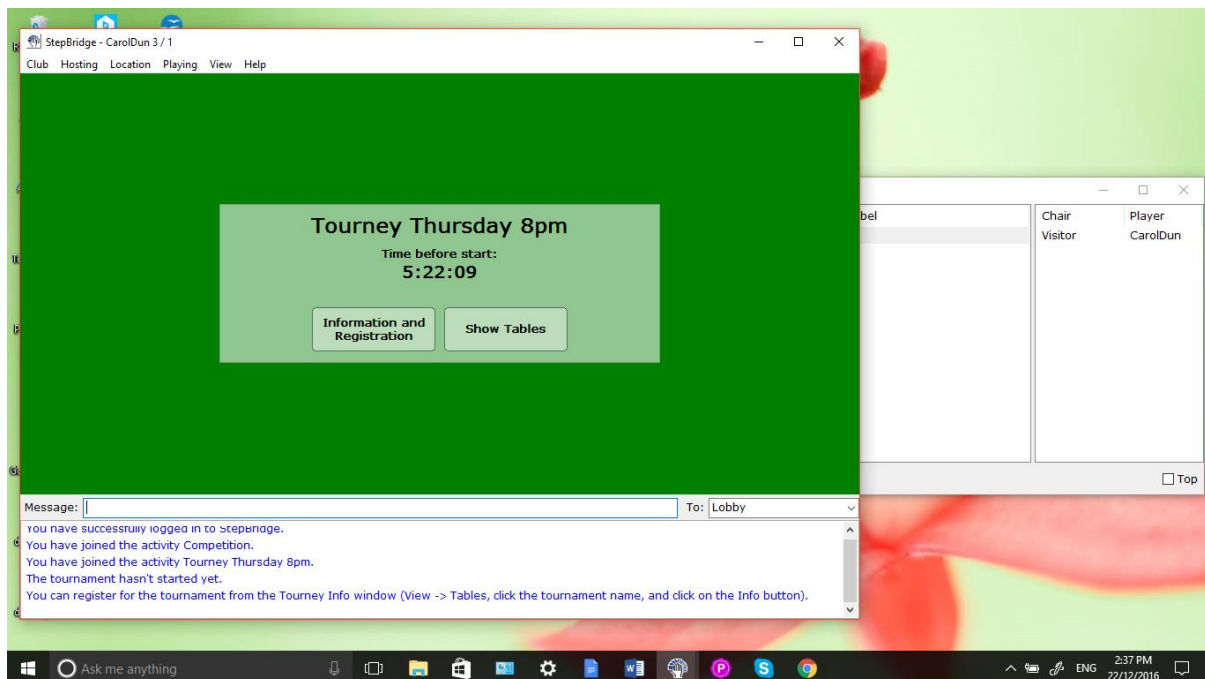


between them when you need one or the other on top.

You will see that you are in the Competition (highlighted in blue) lobby and your name and others are in the Player column. This is where social games are played. You need to go to the tournament lobby if you want to play in a tournament. Do not register here or wait there for your partner to come, move to the Tournament, so let's go. Click on the tournament you want to play in eg Tn Thursday 8 p.m. so it is highlighted in blue, then click on the Join Activity button at the bottom of the screen and you will be in the Tournament Lobby.

You can always check out both lobbies by clicking on Competition lobby you will see it is now highlighted in blue and shows number of players and who there are. Sometime you need to click on middle column showing number of payers for the names to come up. You need to refresh the Tournament/table list frequently as new people arrive and are added and unfortunately it does not refresh itself so

click on the Refresh button on the bottom of the table list whenever you want an up to date list.



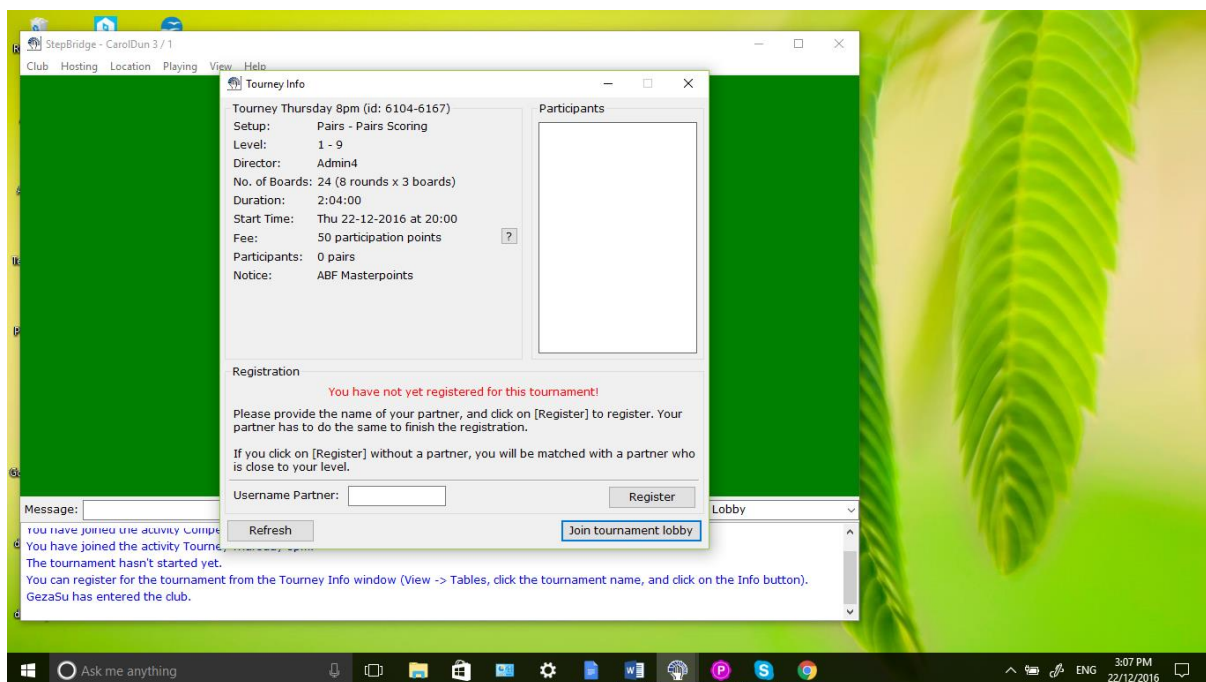
You now see that you are in the tournament lobby and in the centre of the table you can see the name of the tournament and when it will be starting and you will see two buttons in the middle - Information and Registration and Show tables.

Information will show the particulars of the tournament, how many boards are to be played, who is directing, movement etc. See screen below.

REGISTERING. The button for registration is down the bottom. Enter your Username then click register. This will enter you into the tournament as a single entry and the program auto matches you with a partner 5 minutes before start. If you have a partner enter their username too and register. Until your partner has registered with you, you won't see an entry until both have registered. So, if you can't see the registration on the list, use refresh button and if still not listed you can private chat and give a reminder to register.

Do not use the message line to talk to others unless you want to broadcast a message to all.

Show tables button or F6 will bring the Tournament/Table list back up if you have closed it. If still up click refresh and right click on your partners name to open a private chat screen so that you can chat to them. If they are not listed in the tournament lobby check out the Competition lobby by clicking on Competition. You do not have to go there just refresh and look at who is there and right click on name to tell your partner he or she is in the wrong lobby and to register. You can chat to any player privately by doing this.



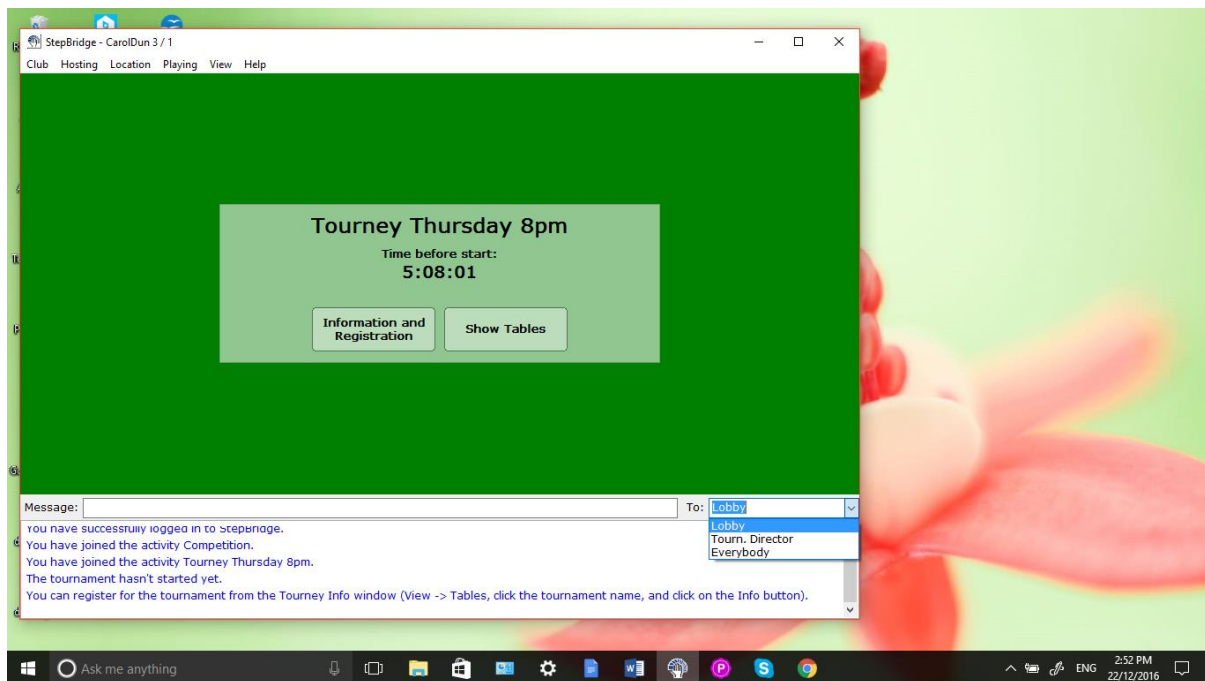
If you have entered as a single your name will come up with a + sign before it to show you are present in the tournament lobby so no need to press Join tournament lobby button at the end of the screen.

If you need to talk to the director at any time you can use the navigation button at the end of the message line to direct the message to a particular place (See next screen showing navigation button activated). Different options are available to you in the Competition

lobby and most importantly during tournament play. Have a look at them and see what they are. Type your message in the message line, use the toggle to see choices and click on Tournament Director and press enter and message will be sent privately.

If after auto match you have not been matched a message will show in the message line telling you of this. If you have been matched a message will show who you are matched with and you can look up the table list again and double click on your partner's name to bring up their System Card so you can see their conventions and details. You can then right click on their name and have a chat before play.

UNREGISTERING. If you have registered singly and another player asks you to play and you accept, go back into Info and registration and unregister. Then re-register entering your partner's username to register as a pair.



This shows the options available before play commences if you want to contact the director.

If you do not want to be manually added by the director at the start send a private message telling them that you wish to be informed about a partner and not automatically added. This way it is your decision.

It is a good time now to increase the size of your message space. Use the size symbol at the top of the message line to shrink some of the green table so there is space for at least 5 lines of chat. If you don't do this chat directed to you can scroll up and you do not see it. You can use the up and down scroll bars to go back and see if you missed any.

Once you have everything in place Stepbridge will remember your settings and you won't have to do it again. Keep altering things until you get what you want.

Use the time before the tournament to discuss systems with your partner.